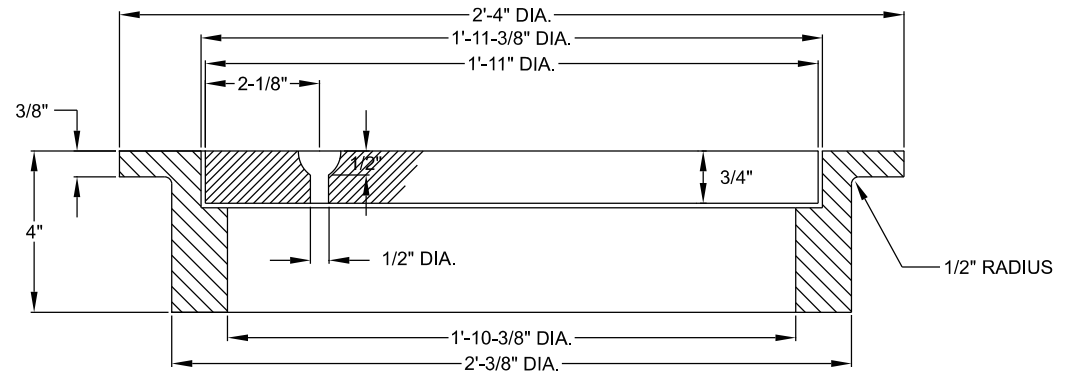


MANHOLE TO BE LABELED AS "STORM SEWER"

| MINIMUM WEIGHT |        |
|----------------|--------|
| RING           | 96 LBS |
| COVER          | 86 LBS |

DIAMOND PATTERN SOLID COVER OR ROUND GRATE COVER

PLAN VIEW



SECTION A-A



MANHOLE RING AND COVER FOR SLAB TYPE CATCH BASIN

**TOWN OF GARNER, N.C.**

DESIGNED BY:  
TOG

APPROVED BY:  
CSJ

REVISED  
FEB. 2022

STD. NO.  
SW-1.04